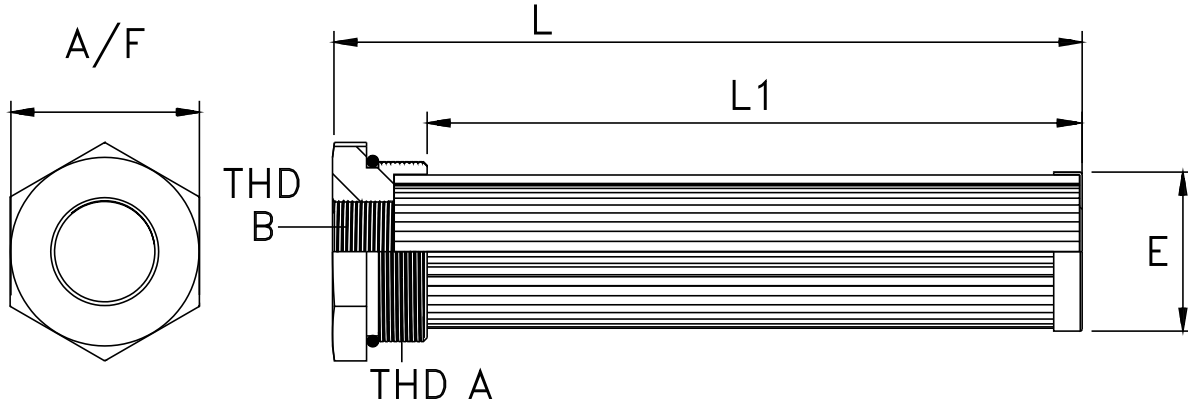


# TANK MOUNTED STRAINER - TMSU



- TANK MOUNTED REUSABLE STRAINER
- SIDE WALL OR TANK TOP MOUNTING
- FLOWS TO 40 GPM (160 LPM )
- STAINLESS STEEL PLEATED MEDIA
- 100 MESH ( 149 MICRON ) STANDARD
- STEEL BUSHING WITH 'O' Ring



Series	Bushing Size Dim. A x Dim. B UN (2A) X UN (2B)		LPM / GPM Rating	Screen Area SQ. IN.	Dimensions				WT KGS
	L	L1			E	A / F			
TMSU - 03	1 - 1/16" - 12 X	3/4" - 16	12 / 3	45	133.5	108	24.0	31.75	0.19
TMSU - 05	1 - 5/16" - 12 X	3/4" - 16	20 / 5	55	137.0	107	28.5	38.00	0.25
TMSU - 10	1 - 5/8" - 12 X	1 - 1/16" - 12	40 / 10	95	200.0	174	36.0	46.00	0.29
TMSU - 15	1 - 7/8" - 12 X	1 - 5/16" - 12	60 / 15	110	210.0	175	42.0	55.00	0.44
TMSU - 20	1 - 7/8" - 12 X	1 - 5/8" - 12	80 / 20	110	210.0	175	42.0	55.00	0.34
TMSU - 30	2 - 1/2" - 12 X	1 - 5/8" - 12	120 / 30	150	210.0	175	54.0	70.00	0.57
TMSU - 40	3 - 3/8" - 12 x	2 - 1/2" - 12	160 / 40	215	210.0	172	78.0	62.00	0.92

## MODEL CODE : ASSEMBLY

TMSU	- 16		- 149	- RB3
SERIES	SIZE	SAE STD THD 'A' THD 'B'	μ MICRONS	OPTIONAL
TMSU	03	12S - 08S	149 - SS 100 MESH STD	RB3 - 3 P.S.I. BYPASS VALVE ( OMIT IF NOT REQD. )
	05	16S - 08S	125 - SS 120 MESH	
	10	20S - 12S	100 - SS 150 MESH	
	15	24S - 16S	074 - SS 200 MESH	
	20	24S - 20S	063 - SS 250 MESH	
	30	32S - 20S	Also - 30 / 60 MESH	
	40	48S - 32S	( OMIT IF STD ).	

## Recommended Weld Flange

To Be Ordered  
Separately

- TWF - 12 U
- TWF - 16 U
- TWF - 20 U
- TWF - 24 U
- TWF - 24 U
- TWF - 32 U
- TWF - 48 U

CONTACT FACTORY FOR OPTIONAL FEATURE